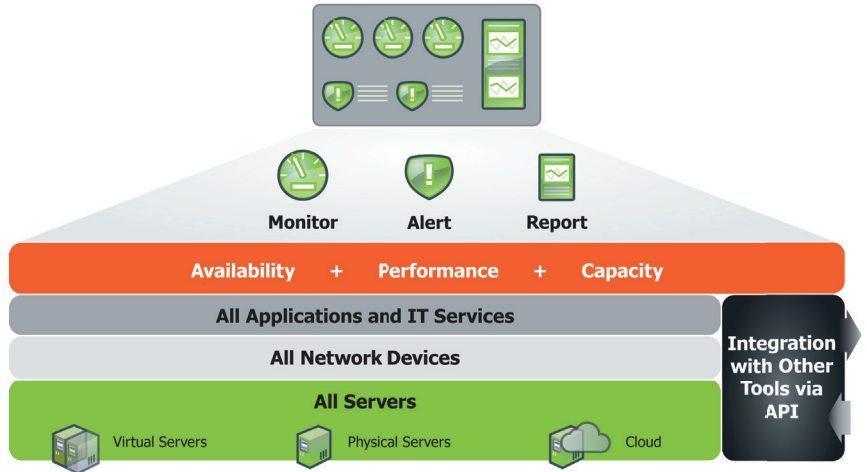


At a glance: unified monitoring

up.time is an enterprise tool that provides a unified view for IT-systems monitoring.

Through proactive, comprehensive and integrated monitoring and reporting, up.time gives complete visibility and control over the availability, performance and capacity of your IT environment, from applications, to servers and virtual machines, to network devices.

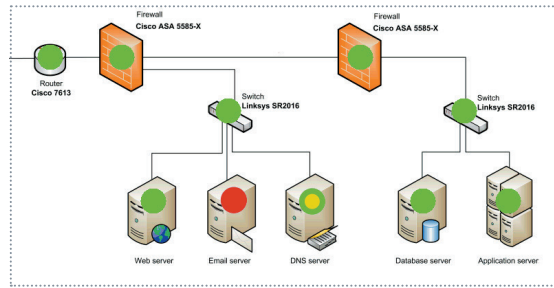
Although comprehensive and scalable, up.time is also easy to use, and can be deployed in minutes.



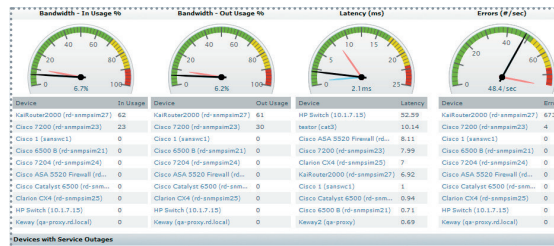
Application Monitoring – Take advantage of dedicated service monitors and metrics for database management and application servers including MySQL, Oracle, SQL Server, Exchange, WebLogic and WebSphere.

Record your own web transactions without scripting. Add checkpoints to define a complex, multi-stage user experience that can then be measured and reported.

Easily define your business applications by assembling a variety of service monitors that represent all of your organization's functions.

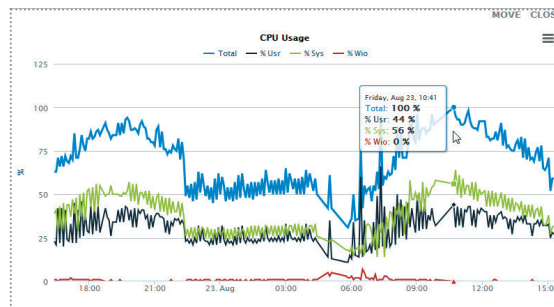


Network Performance Monitoring – Collect performance and configuration data from all of your networking hardware including routers, switches, firewalls, and SAN infrastructure. Alert based on port status, throughput or counts, and SNMP-based metrics. Integrate with thirdparty tools such as Plixer's Scrutinizer to perform detailed NetFlow analysis.



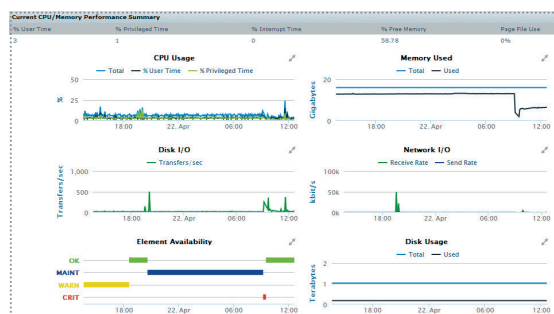
Physical Performance Monitoring – Monitor a wide variety of performance, resource and system-health metrics—right down to the process level—across all platforms.

Use real-time graphing, as well as historical performance and trending reports, to assist with diagnosis or resource planning. Alternatively, use efficiency reports to make better use of your existing resources by identifying virtualization candidates.



Virtualization Performance Monitoring – Monitor your entire virtual stack, including applications, clusters and hosts, resource pools, virtual networks and storage. Analyze workloads for the entire virtual datacenter. Determine underused or abandoned VMs, and track VM net growth and sprawl. Customize your monitored virtual inventory: choose the VMs you want, promote VMs for more detailed monitoring, save historical data of deleted VMs.

Tightly integrate with VMware vSphere for seamless monitoring and reporting for your virtual servers. Auto-discover your entire VMware vCenter inventory, and automatically mirror configuration and inventory changes with vSync.



We looked at a stack of solutions, including the larger tier vendors, but deployment times and costs were unreasonable. up.time was the quick deployment and quick results software solution we wanted.

- Toll Holdings Group leading integrated logistics provider with revenues of \$8 billion USD

Comprehensive, Proactive Reports – Easily create reports for all tiers of your IT environment, and proactively manage IT resources and deployment. Use collected data to base your decisions on facts: spot trends, identify inefficiencies, troubleshoot, gain insight.

Generate availability and SLA reports that demonstrate success in fulfilling expectations of IT.

Top Resource Consumers Summary

These systems are your top consumers in each capacity category

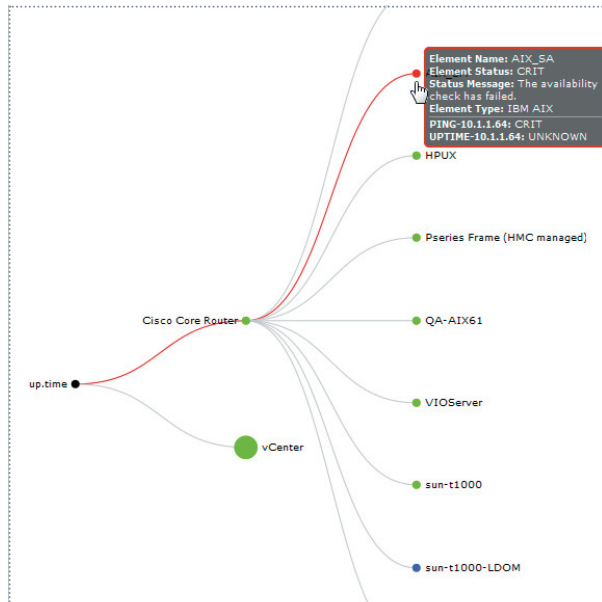
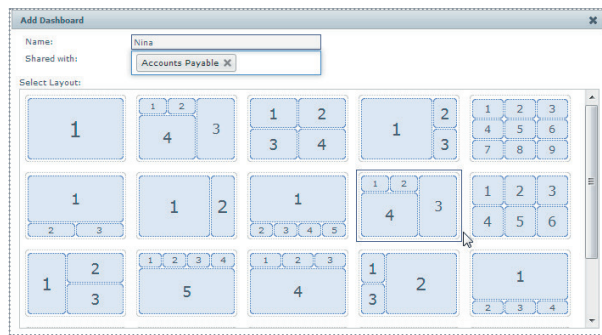
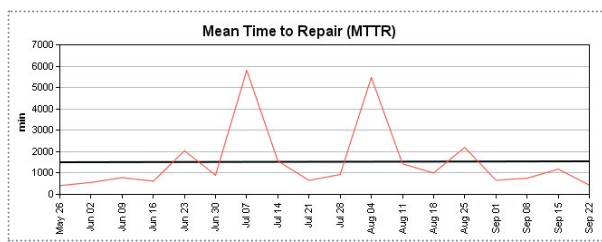
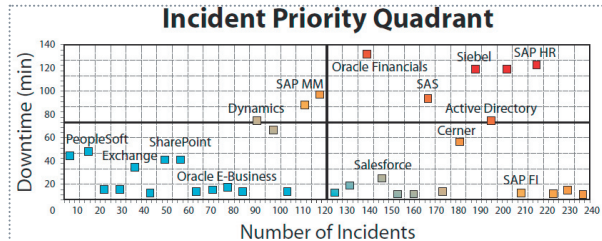
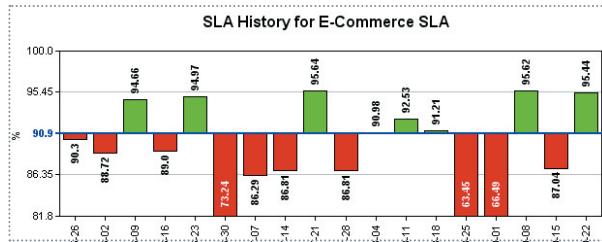
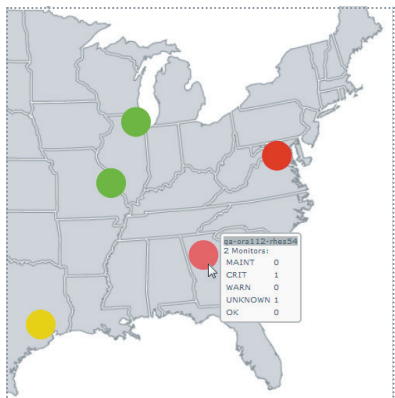
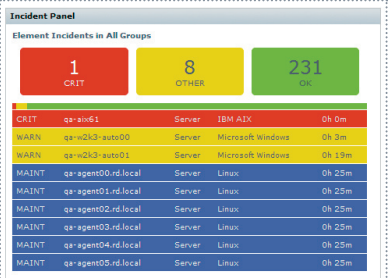
Top Servers

CPU	%	Memory	%	Swap
SnoopD	56	SnoopD	93	Novell
Oracle11	43	Novell	81	The Zones A
Exchange 2010	33	exch-2d02	79	exch-2d02
QA Exchange Server	28	qa-win7-x64	74	SnoopD
VMH RD7	25	Exchange 2010	70	qa-win7-x64

Top Network Devices

In Rate	%	Out Rate	%	Errors
rd-snm27/v1206	98	rd-snm27/v1206	98	rd-snm27/v1203
rd-snm23/Fs6/0	80	rd-snm23/Fs6/0	96	rd-snm27/v1204
rd-snm27/v1203	80	rd-snm23/Fs3/0	80	rd-snm23/Fs2/0
rd-snm23/Fs1/0	48	rd-snm27/v1203	80	rd-snm23/Fs3/0
rd-snm23/Fs10/0	30	rd-snm23/Fs9/0	30	rd-snm23/Fs3/0

Customizable dashboards – Use the up.time API to access status information for all service monitors and monitored elements. Display this information in custom gadgets, whether customized or out of the box. Administrators and business users alike can assemble dashboards with an easy-to-use interface.



Auto-Discovery – Simplify deployment and inventory updates. The auto-discovery process scans your network for devices and systems, without requiring you to know every IP address. It also detects and syncs entire VMware vCenter Server inventories.

Alerts and escalation policies – Alert based on any combination of performance states. Contact the correct administrators only when outages aren't addressed in the prescribed time.

Self-healing actions – Configure servers to automatically react to failure conditions with scripted actions before contacting administrators.

Multiple users – Modular user definitions by role and group allow you to provide access for every part of the business. AD or LDAP integration eliminate redundancy and setup time.

Maintenance on demand – In addition to scheduling downtime, instantly place a monitored element, or entire groups, in maintenance, to accommodate ad-hoc fixes.

VM power-state monitoring – Ensure mission-critical virtual resources are always running, but avoid unnecessary alerts when others shut down.

Smart topologies – Focus on the real issues. Elements check "up" when experiencing problems to verify the source; conversely they won't cause redundant alerts with topological dependencies.

WMI integration – Take full advantage of existing infrastructure for detailed Windows metrics collection.

Learn more about up.time – Visit us at <http://www.uptimesoftware.com>.

- watch the 2-minute video
- visit the up.time Live Demo portal
- view white papers, case studies, and more resources
- download a free 30-day trial

To request a demo, or inquire about licensing, contact us:

- sales@uptimesoftware.com
- 1.877.464.3372 (North America)
- +1 713.523.4433